



Dsg1 Polyclonal Antibody

Catalog No	YP-Ab-17114
Isotype	IgG
Reactivity	Human;Mouse;Rat
Applications	WB;IHC;IF;ELISA
Gene Name	DSG1 CDHF4
Protein Name	Desmoglein-1 (Cadherin family member 4) (Desmosomal glycoprotein 1) (DG1) (DGI) (Pemphigus foliaceus antigen)
Immunogen	Synthetic peptide from human protein at AA range: 30-90
Specificity	The antibody detects endogenous Dsg1
Formulation	Liquid in PBS containing 50% glycerol, 0.5% BSA and 0.02% sodium azide.
Source	Polyclonal, Rabbit,IgG
Purification	The antibody was affinity-purified from rabbit antiserum by affinity-chromatography using epitope-specific immunogen.
Dilution	WB 1:500-2000,IHC-p 1:500-200, ELISA 1:10000-20000. IF 1:50-200
Concentration	1 mg/ml
Purity	≥90%
Storage Stability	-20°C/1 year
Synonyms	Desmoglein-1 (Cadherin family member 4;Desmosomal glycoprotein 1;DG1;DGI;Pemphigus foliaceus antigen)
Observed Band	160kD
Cell Pathway	Cell membrane ; Single-pass type I membrane protein . Cell junction, desmosome.
Tissue Specificity	Epidermis, tongue, tonsil and esophagus.
Function	disease:Defects in DSG1 are the cause of palmoplantar keratoderma striate type 1 (SPPK1) [MIM:148700]; also known as keratosis palmoplantaris striata I. SPPK1 is a dermatological disorder characterized by thickening of the skin on the palms and soles, and longitudinal hyperkeratotic lesions on the palms, running the length of each finger.,domain:Calcium may be bound by the cadherin-like repeats .,function:Component of intercellular desmosome junctions. Involved in the interaction of plaque proteins and intermediate filaments mediating cell-cell adhesion.,similarity:Contains 4 cadherin domains.,tissue specificity:Epidermis, tongue, tonsil and esophagus.,
Background	This gene encodes a member of the desmoglein protein subfamily. Desmogleins, along with desmocollins, are cadherin-like transmembrane glycoproteins that are major components of the desmosome. Desmosomes are cell-cell junctions that help resist shearing forces and are found in high concentrations in cells subject to mechanical stress. This gene is found in a cluster with other desmoglein family



members on chromosome 18. The encoded protein has been identified as a target of auto-antibodies in the autoimmune skin blistering disease pemphigus foliaceus. Disruption of this gene has also been associated with the skin diseases palmoplantar keratoderma and erythroderma. [provided by RefSeq, Feb 2015],

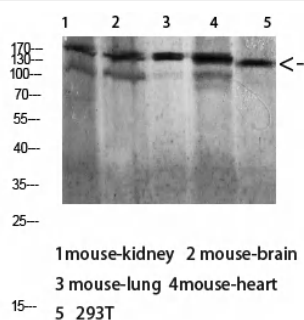
matters needing attention

Avoid repeated freezing and thawing!

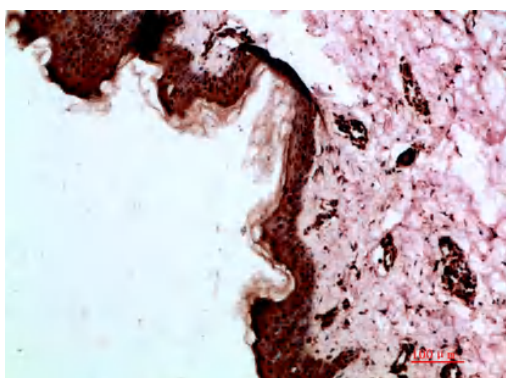
Usage suggestions

This product can be used in immunological reaction related experiments. For more information, please consult technical personnel.

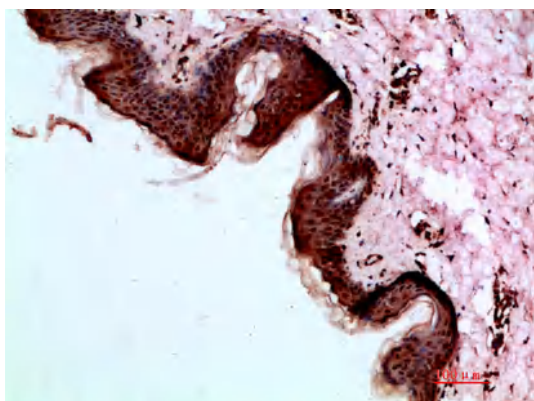
Products Images



Western blot analysis of 293T lysate, antibody was diluted at 1000. Secondary antibody(catalog#:RS0002) was diluted at 1:20000



Immunohistochemical analysis of paraffin-embedded human-skin, antibody was diluted at 1:200



Immunohistochemical analysis of paraffin-embedded human-skin, antibody was diluted at 1:200